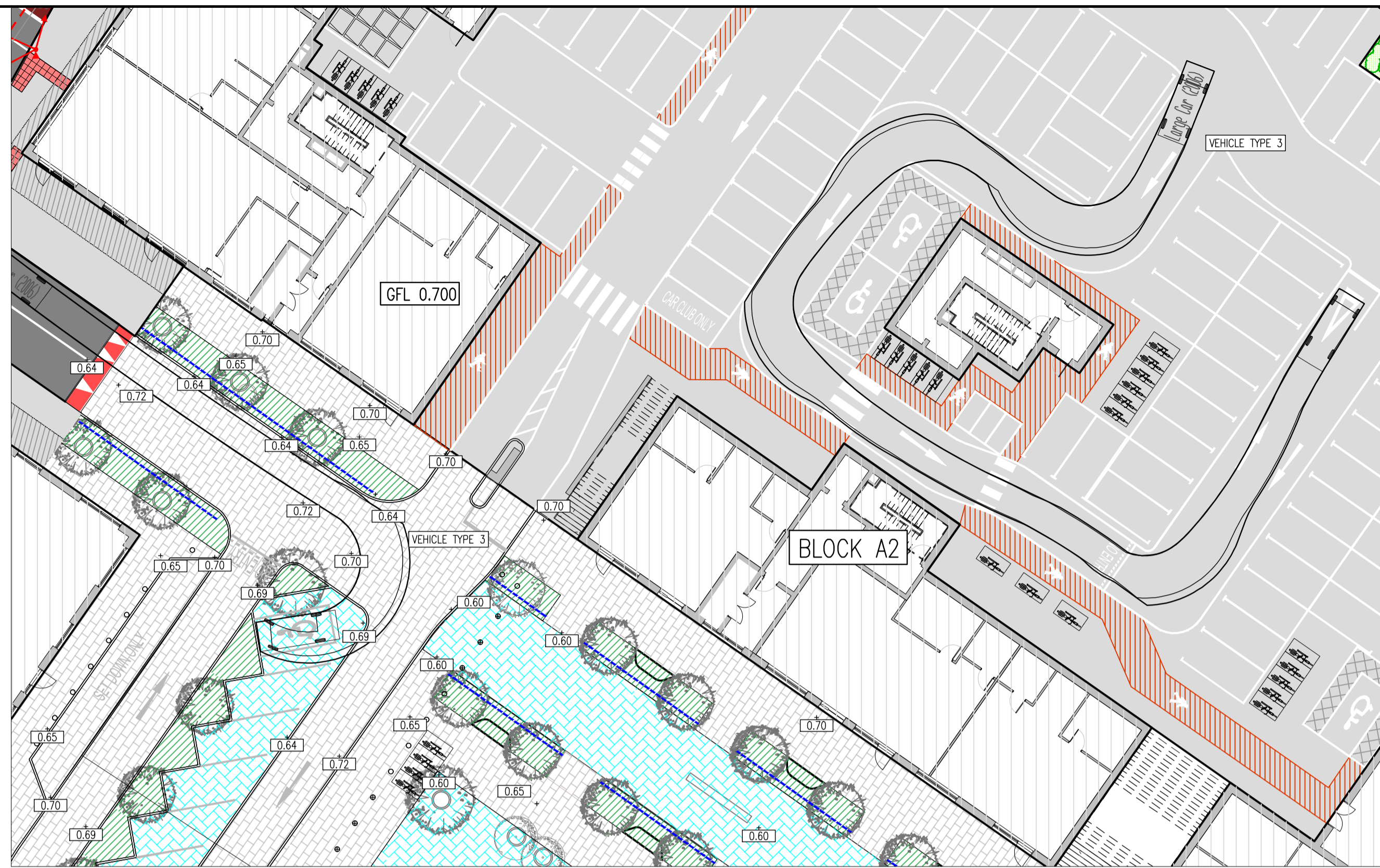
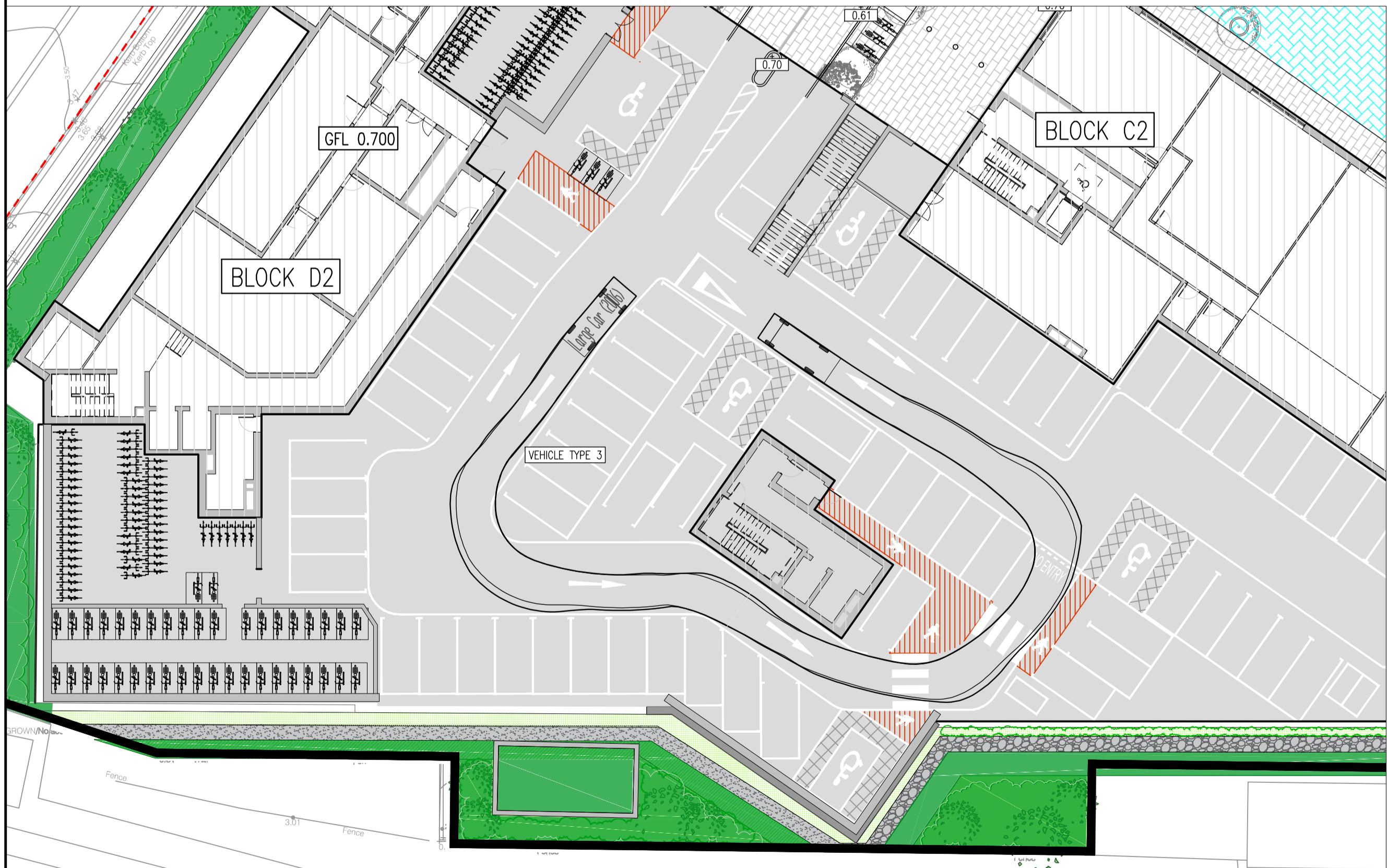


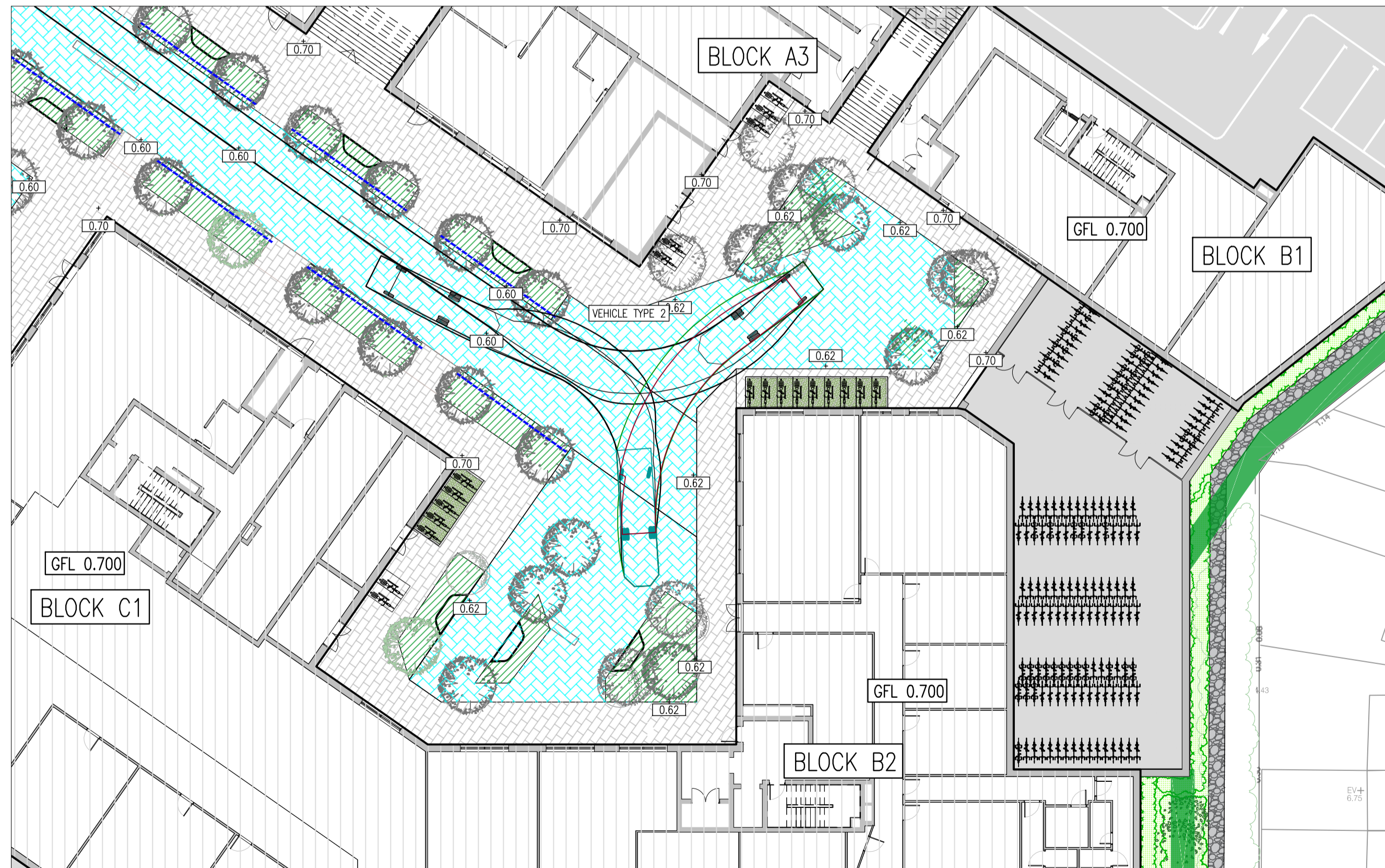
VEHICLE TRACKING INSET 1



VEHICLE TRACKING INSET 2

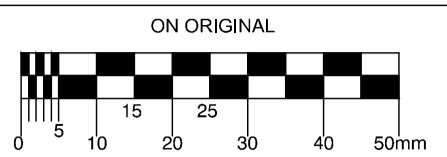


VEHICLE TRACKING INSET 3



VEHICLE TRACKING INSET 4

© COPYRIGHT OF THIS DRAWING IS RESERVED BY DBFL CONSULTING ENGINEERS. NO PART SHALL BE REPRODUCED OR TRANSMITTED WITHOUT THEIR WRITTEN PERMISSION.



- NOTES:
1. ALL WORKS TO BE CONSTRUCTED IN ACCORDANCE WITH THE NRA SPECIFICATION FOR ROAD WORKS UNLESS OVERRIDDEN BY DUBLIN CITY COUNCIL STANDARDS.
  2. ALL ROAD MARKINGS & SIGNS SHALL COMPLY FULLY WITH THE TRAFFIC SIGNS MANUAL PUBLISHED BY THE DEPARTMENT OF TRANSPORT, JUNE 2010.
  3. SIGNS & MARKINGS: CONTRACTOR TO CONFIRM PRECISE SETTINGS OUT WITH EMPLOYERS REPRESENTATIVE PRIOR TO COMPLETION.
  4. ALL SIGNS TO BE MOUNTED ON 75mm GALVANISED STEEL POSTS WITH COLOURED SLEEVES U.N.O. TO SPECIFICATION AND IN ACCORDANCE WITH THE TRAFFIC SIGNS MANUAL: MOUNTING HEIGHT TO BOTTOM OF SIGN = 2.3m U.N.O.
  5. ALL TRAFFIC MANAGEMENT TO COMPLY FULLY WITH THE PROVISIONS OF CHAPTER 8 OF THE TRAFFIC SIGNS MANUAL.
  6. ALL CO-ORDINATES ARE TO ITM
  7. ALL LEVELS ARE TO ORDINANCE DATUM AND ARE IN METRES
  8. ALL STREET FURNITURE TO BE TAKEN UP AND SET ASIDE FOR RE-USE. PROPOSED STREET FURNITURE TO BE RETROFITTED BY OTHERS.
  9. ALL EXISTING SIGNS (INCLUDING POLES) AND MARKINGS TO BE TAKEN UP OR COVERED AND TEMPORARY MEASURES APPLIED IN ACCORDANCE WITH CONTRACTORS TRAFFIC MANAGEMENT PLAN. THE CONTRACTOR MAY USE EXISTING SIGNAGE AS PART OF THEIR TRAFFIC MANAGEMENT PLAN.
  10. ALL EXISTING CHAMBERS AND ACCESS POINTS TO REMAIN CLEAR OF OBSTRUCTION THROUGHOUT WORKS. CHAMBERS SHALL BE REBUILT/RETAINED IN POSITION IDENTIFIED ON FINISHING WORKS DRAWING.
  11. ALL PEDESTRIAN, CYCLE AND VEHICULAR ROUTES MUST BE RETAINED IN ACCORDANCE WITH APPROVED TRAFFIC MANAGEMENT PLAN.
  12. ALL MATERIALS TO BE DISPOSED OFF SITE SHALL BE TAKEN TO A LICENSED FACILITY APPROVED BY DUBLIN CITY COUNCIL.
  13. UNLESS OTHERWISE IDENTIFIED ALL KERBS ARE 100mm HIGH

LEGEND

	VEHICLE TYPE 1
	VEHICLE TYPE 2
	VEHICLE TYPE 3

3832 Refuse Vehicle  
Overall Length: 12.20m  
Overall Height: 3.20m  
Min. Wheel Spacing: 3.00m  
Min. Wheel Spacing Clearance: 3.00m  
Clearance to Curb: 3.00m  
Clearance to Kerb: 3.00m  
Clearance to Kerb Turning Radius: 9.25m

3832 Fire Appliance  
Overall Length: 12.20m  
Overall Height: 3.20m  
Min. Wheel Spacing: 3.00m  
Min. Wheel Spacing Clearance: 3.00m  
Clearance to Curb: 3.00m  
Clearance to Kerb: 3.00m  
Clearance to Kerb Turning Radius: 9.25m

Large Car (2004)  
Overall Length: 4.50m  
Overall Height: 1.50m  
Min. Wheel Spacing: 2.50m  
Min. Wheel Spacing Clearance: 2.50m  
Clearance to Curb: 2.50m  
Clearance to Kerb: 2.50m  
Clearance to Kerb Turning Radius: 9.25m

REV.	DATE	DESCRIPTION	BY	CHKD.
<b>PLANNING</b>				
DESIGNED	NJF	PREPARED	NJF	
DATE	APRIL 2019	CHECKED	DJR	

**DBFL**  
DUBLIN OFFICE: Ormond House, Upper Ormond Quay, Dublin 7, Ireland. PHONE +353 1 400 4000 FAX +353 1 400 4050

WATERFORD OFFICE: Unit 2, The Chandlery, 1-2 O'Connell Street, Waterford, Ireland. PHONE +353 51 309 5300 FAX +353 51 844 913

DBFL Consulting Engineers email: info@dbfl.ie site: www.dbfl.ie

PROJECT  
**DEVELOPMENT AT 1-4 EAST ROAD DUBLIN**

DRG. TITLE  
**VEHICLE TRACKING**

CLIENT  
**GLENVEAGH**

SCALE 1:250 @A1 FILE REF. 170200-2000  
DRG. NO. **170200-2003**